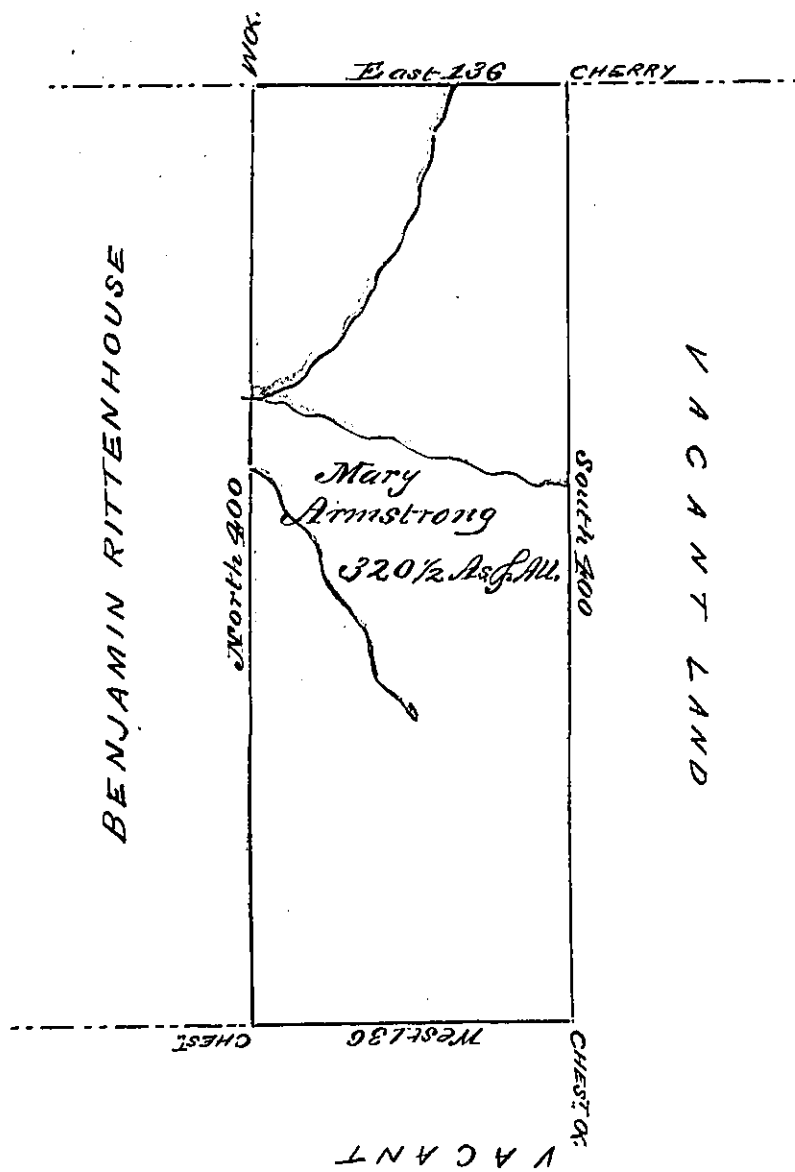


FRANCIS LALLY



Survey'd. to Mary Armstrong on the 17th day of October 1774 the above described tract of Three hundred & twenty acres & an half of an acre of the usual allowance of six Pct. situate on the East Branch of Kanawhanock adjoining Benjamin Rittenhouse in Westmoreland County By warrants of the 22^d day of June 1774.

J. Joshua Elder D. S.

To John Lukens Esq. S. Genl.

IN TESTIMONY that the above is a copy of the original remaining on file in the Department of Internal Affairs of Pennsylvania, made conformably to an Act of Assembly approved the 16th day of February, 1833, I have hereunto set my Hand and caused the Seal of said Department to be affixed at Harrisburg, this

tenth day of February 1835

J. Simpson Africa,
Secretary of Internal Affairs